

# Washington State Beekeepers Association



*Keep the "Bee" in Business*

Publication of Washington State Beekeepers Association

www.wasba.org

November 2006

## President's Message

I feel a lot better about things today. Cliff and I just finished extracting on Nov. 5, and that is the latest date ever for us. It seems this year is tough on everyone with so much to do and the bees keeping us really busy. I still have a lot to do yet but the worst is over and the rest can be done this winter. Many WSBA members are leaving for the annual trek to California with their bees. It is only the beginning of many trips for them and we wish them the best and safe travels.

We sure had a great convention with the Mt Baker Beekeepers Association sponsoring it. A very special thanks goes to Paul Spinelli and Stan Hanson as their organization pulled off a great convention. I'm sure the Mt Baker group is glad it is over. The speakers were fantastic and really put on a good show for us. We got a lot of business done at the convention and everyone had a great time. Our thanks goes out to the Best Western Lakeway Inn as they provided great food and service and Wolfgang Schlager did a great job with them.

One new note this past week we had a new grandson born last Monday night and that makes number 7 for Rita and me. We have truly been blessed. Mother and baby are doing great and now another household is not getting any sleep.

If you had not heard, Miriam Bishop underwent cancer surgery on October 13. We have heard from her and she is out of the hospital and doing better. We all wish her the very best in her recovery.

I have not worked out our meeting schedule yet for next year but will be letting everyone know as soon as I can figure it out. Please take time to enjoy your families as this holiday season approaches and may we all be thankful for them.

Jerry Tate

## Convention Auction Results

The Thurber, Timmons and VanWechel Scholarship funds benefited from your generosity by \$3,620.

Thank you all for supporting beekeeping research in Washington State!

## Executive Board Meeting Minutes

October 12, 2006 Executive Board Minutes

By Jim Bach

The meeting was held in the Best Western Lakeway Inn & Convention Center, Bellingham, Washington.

Vice President Eric Olson called the meeting to order in the absence of President Jerry Tate who arrived 1.5 hours later.

Persons in attendance included: Lisa Knox, Jodi Lynn Pilar-ski, John Timmons, Tim Bueler, Jerry Robnett, Steve Sheppard, Sam Hyde, Marina Meixner, Paul Hosticka, James Bach, Sue Olson, Eric Olson, Mary Toohey, Van Sherod, Bob Arnold, Robert Smith, Paul Lundy and Erik Johansen. Coming in later were Jerry Tate, Cliff Tate, Linda Carney, Susan Hosticka and Connie Bueler.

Eric requested Steve Sheppard, WSU to give his report of the queen breeding program. He requested that those indi-

*(Continued on page 2)*

## Thank you Mount Baker Beekeeping Association!

Thanks to everyone who helped with the great convention in Bellingham. We would especially like to congratulate the following for a job well done:

Paul Spinelli  
Stan Hanson  
Jo Miller  
Cathy Duren  
Jim Lyons  
Francis Charlock  
Pete Sallee  
Cathy Brooking  
Wolfgang Schlager  
Jim Mullen

# Executive Board Meeting Minutes, continued

(Continued from page 1)

viduals and local beekeeper associations that had received queens from the program write letters of support and interest in the continuing breeding program at WSU. They need the letters in Pullman by November 5, 2006. Persons that received queens include: the Inland Empire Beekeepers Assoc., local associations in Exec. Committee area 1a, Pierce County Beekeepers Assoc., the Washington State Beekeepers Assoc. (WSBA), the Oregon State Beekeepers Association and certain beekeepers in Idaho. Eric will contact Tom Hamilton of Idaho and request a support letter.

Though the breeding program did not receive support funds from a past source last year they were able to get funding from the Thurber endowment and a small grant from another source to continue the program. Next year the program will continue to purchase queen cells and distribute free queens for evaluation to beekeeper partners. Steve hopes to get funding from the Sustainable Agriculture Research Education (SARE) program.

Hive Registration and Funds at WA State Department of Agriculture (WSDA):

Mary Toohey, WSDA Assistant Director, discussed the current positions on the Apiary Advisory Committee (AAC) as stated in Chapter 15.60 RCW. They include: "members representing the major segments of the apiary industry including commercial and non-commercial beekeepers, representatives from the Washington State University apiary program or cooperative extension, and receivers of pollination services as deemed appropriate."

The committee's duty is to "advise the director on administration of the chapter and issues affecting the apiary industry. The committee may also advise the director on the funding of research projects of benefit to the apiary industry." There is a current balance in the Apiary Program fund of \$73,534. The registration process costs approximately \$2,000 per year to administer.

Past minutes of the WSBA show that the organization has already decided to continue registration of beekeepers and non-resident pollinators. The funds received are to be spent on honey bee research. There was a consensus that persons nominated to the AAC should be those who have paid registration fees on their bee hives. There was discussion of how the nomination process worked in the past. Requests for nominations were passed around between the associations in each AAC area so that each association would have a chance to represent beekeeper interests in the area. There are currently 13 associations in six AAC areas.

(Continued on page 3)

## Tate's Honey Farm

E. 8900 Maringo Drive  
Spokane, WA 99212

Wes Tate Rita Tate Jerry Tate

Beekeeping Supplies Honey, Comb Honey  
Pollination Service Pollen  
Package Bees, Queens Candle Making  
Bulk Bees Wax Extracting Equipment

509-924-6669 taccon105@icehouse.net  
www.tateshoneyfarm.com

## Buckfast & All – American

### Queens • Package Bees

www.rweaver.com

### The R Weaver Apiaries, Inc.

16495 C.R. 319 Navasota, TX 77868

Phone: 936-825-2333 Fax: 936-825-3642

E-MAIL: rweaver@tca.net



## Trees 'n Bees, Inc.

Beekeeping Supplies  
Queens & Packages  
Honey and Gift Items

Saturday 10 - 4  
Monday 5 - 8 pm  
Thursday Noon - 7 pm

Loren & Carolyn Elliott  
34747 162nd Ave SE  
Auburn, WA 98092

253-939-1149  
800-696-8288  
info@treesnbees.com



Everything  
for the Beekeeper

Call our branch offices: Pat in Fresno or John in Chico  
for fast courteous service. Free Full Color Catalog

PO Box 2837  
2765 South Golden  
State Blvd.  
Fresno, CA 93745  
Phone (559) 495-0230  
Fax (559) 495-0232  
Toll Free 1-877-432-3268



15 C Valley Court  
Chico, CA 95973  
Phone (530) 893-0921  
Fax (530) 893-0922  
Toll Free 1-877-332-3268

Website:  
www.dadant.com

## Executive Board Meeting Minutes, continued

(Continued from page 2)

Lisa Knox suggested that we should have each nominee submit a biography to aid the WSDA Director in selecting members for the Committee. A motion was made that we request a biography from each nominee to give the Director of WSDA guidance on selecting the appropriate person to sit on the AAC. Motion made by Jim Bach, second by John Timmons, carried. Tim Buehler offered an amendment to the motion to have the current committee consisting of Eric Olson, John Timmons and Jim Bach receive the nominations and categorize them by past AAC area. Second by Lisa Knox, carried. The amendment passed without dissent as did the amended motion.

Mary Toohey requested that she receive a copy of the nominations when they are sent to the Director of WSDA. She also requested a copy of the AAC area map.

Erik Johansen – Oregon revising the Pollinator Protection extension bulletin.

The current cost overrun on revising the bulletin is \$14,067. It consists of \$11,000 for salary and \$3,000 for the printing of the first 2,000 copies. Oregon is soliciting donations from the three states and beekeeper associations to make up this shortfall. Bob Smith made a motion that the Executive Board recommend to the general membership that WSBA fund one third of the shortfall. Seconded by Jodi Pilarski. Motion carried.

Sue Olson – Report from the National Honey Board Nominations Committee.

Her term is up on June 30, 2007. Persons on the Nominations Committee meet once each year to select four persons from each area as nominees to sit on the National Honey Board (NHB). USDA makes the final appointments. The Honey Packers and Importers are trying to replace the National Honey Board with a Packer Importer Board. Bob Arnold and Paul Lundy as alternate were selected to represent WSBA on the NHB nominations committee.

Section 18 labels.

Coumaphos is still needed in Washington for the treatment of Small Hive Beetle (SHB). A motion was made to request EPA

(Continued on page 4)

Pickup Your Honey Robber® And Save Shipping!  
**Visit our full service branch & warehouse**  
in Woodland, California

Moves  
Bees Fast!



High Fructose Corn Syrup, Woodenware,  
Hardware, Clothing, Containers, Feeds,  
Medications & Much More Available For Pickup!!

Located near I-80 &  
I-5 junction



Call to request your FREE  
copy of our 2006 catalog.

**866-880-7678**

**Mann Lake Ltd.**

501 1st Street South  
Hackensack, MN 56452-2589  
800-880-7694

1250 Harter Avenue  
Woodland, CA 95776-6106  
866-880-7678

# Executive Board Meeting Minutes, continued

(Continued from page 3)

renew the section 18 for Coumaphos for SHB. Second by Tim Bueler, carried. Jerry Tate made a motion to have a WSBA committee review the documentation to have Hivastan registered by EPA for control of Varroa mites. Second by John Timmons, carried. The current group reviewing the request from Eric Johansen is Bob Arnold, Eric & Sue Olson, Tim Bueler, Lisa Knox & Paul Lundy and Jim Bach. Motion carried.

Lisa Knox gave a brief report on the two WSBA / WSU field days held in June and July. Tim Bueler made a motion to accept Lisa's report, seconded by John Timmons, carried.

Treasurer's Report by Lisa Knox.

Lisa distributed a printed financial report. She amended it with the addition of \$900 to the VanWechel CD. The current balance is: \$80,355.72. See the financial report in the annual meeting minutes page 6. Jerry Tate mentioned that he thought that any profits from field day hosting should go to the hosting association treasury. Those present appeared to agree with Jerry.

A list of WSBA members is published in the convention syllabus.

Paul Lundy - Master beekeepers report.

The new web site is up and running. Four persons contacted the site since its life began including one person who took the certified test and passed.

Mention was made that Steve Sheppard has not issued any certificates since Sally left in 2005. Certificates have not been mailed to recipients. It is not known whether Steve has kept the supporting test answer sheets. Steve was out of the room so couldn't be asked for details. Jerry will discuss this with Steve. Paul Lundy moved acceptance of his report. Second by Bob Smith, carried.

Jim Miller mentioned that the Republic of Georgia has now started a Beemaster course.

General discussion:

Mention was made that Steve Sheppard has promised to provide regular Thurber Chair reports for publishing in the WSBA newsletter. None have been received to date.

The state newsletter could contain a calendar of local association meeting dates, locations, classes, fairs, speakers etc. Local association newsletter editors should communicate their association information to Paul Lundy.

Discussion occurred about the pamphlets handed out at the fairs in Spokane and the northwest. WSBA could create a pamphlet that could be used at all fairs in Washington.

The next newsletter will be out on November 1<sup>st</sup>. October 31 is the deadline for submissions.

Miriam Bishop will be in surgery at the U of W hospital for pancreatic cancer on the 13<sup>th</sup>.

Mt. Baker association speaker selections: Jerry Tate asked if the WSBA could pay the cost of having Sue Cobey at the convention. Eric Olson moved that WSBA pay the cost of her travel, etc. Second by John Timmons, carried.

Auditors: Connie Bueler and Sue Olson.

Jim Miller moved that the Executive Board meeting adjourn. Second by John Timmons, carried.

Meeting adjourned at 7:30 pm



Steamboat Lil's Bee Supply

MARION B. JUHL  
LILLA M. JUHL

6425 41st Ave. NW  
Olympia, WA 98502

(360) 866-9257



GARDNER GARDENS™

Try our beeswax skin cream for dry itchy skin. Contains almond and coconut oils, beeswax, vitamin E and propolis.

Call 509-996-2522  
or e-mail [sabold@methownet.com](mailto:sabold@methownet.com)  
[www.gardnergardens.com](http://www.gardnergardens.com)

# News from the WSU honey bee laboratory

By the end of October, the bees had been "put up" for the winter. Around Pullman, we do not consider winterizing complete until we get the mouse guards installed. A mouse guard is a screen of 1/2-inch mesh hardware cloth stapled over the entrance of every single hive. As part of our historical learning curve from the school of hard knocks, when this simple device was not used at one of our Pullman apiaries a few years ago, over half of the colonies at this site had large multi-generational mouse family nests inside them in the Spring. The bees in those colonies did not make it.

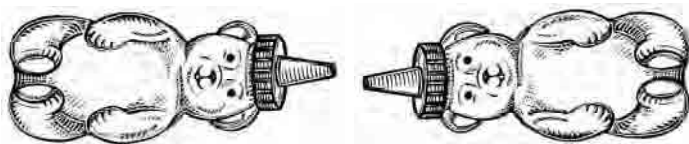
The last real bee work around here was a few weeks ago when we combined the last of the lightweight colonies during a round of sucrose and protein patty feeding. At this point in time, all the colonies are in two deeps with plenty of food. To have them in any other condition is not really an option, because we cannot count on any nice weather for bee work from this point forward. To make the point clear, it was 11 degrees F on Halloween morning.

Our skilled beekeeping technician, Doug, had to leave WSU and return to his native Illinois this fall to assist with long-term family matters. He will be sorely missed, but everyone pitched in to take up the slack at the end of the bee season. In addition to the bee work, most of us have attended various bee meetings over the past several months. The WSBA annual conference in Bellingham was outstanding and spoiled the new guy at WSU (Sam) for all future bee meetings. Our request for support letters for a USDA-SARE proposal to continue the WSU honey bee breeding program was met with enthusiasm at WSBA and we had already received several of the letters a week before the November 5 deadline.

The WSU bee-breeding program produced around 550 queens in 2006. Many of these queens went into our program colonies in Pullman and Puyallup for continued selection efforts or were sent to collaborating researchers at the USDA and Cornell. A small number of WSU queens were exchanged with commercial queen producers - as a result we received additional material for testing and the producers received WSU stocks for evaluation and potential inclusion in their operations. A third group of queens was used to set up a large-scale test of WSU honey bee stocks within commercial migratory operations in Washington and Oregon. A fourth group of queens was provided to use in three WSBA-WSU collaborative apiaries managed by local associations (or groups of associations) in Spokane, Puyallup and Mt. Vernon, WA. These apiaries will provide an initial outlet for WSBA beekeepers to access WSU honey bee genetic material. Some beekeepers began rearing daughter queens from these stocks in 2006 and more queen rearing activities are planned for 2007. We plan to include more training on this topic at the next WSU beekeeping short course and, as possible, at the collaborative apiary locations in 2007.

For those of you keeping track of such things, the entire genome of the honey was recently sequenced and the results published last week in the journal *Nature*. The honey bee is the fourth insect genome to be sequenced, but the first social insect. The availability of the complete sequence of the genome means that it will be possible for scientists to characterize the function and regulation of specific genes that code for everything (that we can think of) that defines a honey bee, from morphology and physiology to behavior. A related paper, published last week in the journal *Science*, used a large set of newly reported genetic markers to show the genetic influence of the "black bee" of western Europe (*A. m. mellifera*) on Africanized honey bee population in South America and south Texas.

The current lab roster includes: an undergraduate honors student (Brett Cole), three MSc students (Fatima Al-hamlan, Sam Hapke, Ben Horwath), a PhD student (Debbie Delaney) and Drs. Marina Meixner and Steve Sheppard.



**GLORYBEE BEEKEEPING SUPPLIES**  
Serving Northwest Beekeepers for over 25 years



Complete Hives  
Live Bees  
Bee Tools  
Bee Feed & Medicine  
Clothing  
Honey Bottling  
and much more...  
Shop Online at  
[www.GloryBeeFoods.com](http://www.GloryBeeFoods.com)

GloryBee Foods Inc. | Eugene, OR | (800) 456-7923 | [www.GloryBeeFoods.com](http://www.GloryBeeFoods.com)

## The Convention

The Conference in Bellingham Washington was great. Lisa and I had a nice fall drive. Darn nice place for a convention! The Mount Baker folks put on a very well run convention and I thank them. Here are highlights of the speakers.

Dr. Jay Evans:

Discussed bee genomics. Jay is working with honey bees to find bees resistant to AFB. They are purposefully inoculating colonies with AFB and selecting survivors. They are also using SNP analysis {Single nucleotide polymorphisms (SNPs), which are DNA sequence variations that occur when a single nucleotide (A,T,C, or G) in the genome sequence is

(Continued on page 7)

# Master Beekeepers Committee Meeting Minutes

Master Beekeepers Certification Program  
Committee meeting October 12, 2006

Meeting was called to order by Chair Paul Lundy.

Attended by the following committee members:

Chair- Paul Lundy

Treasurer- Robert Smith

Bob Zahler

Jody Pilarski

Co-chair- Jo Miller

Secretary- Tim Bueler

Van & Barb Sherod

Jim Bach

Minutes were published in the last newsletter. Lundy called for approval of minutes as printed. The motion was made and seconded. The motion carried.

Treasurer's Report: Smith reported the current account balance is \$2746.84 with an additional \$30 to deposit.

Chair Lundy passed out CD's containing official copies of tests, keys, progress form and various other information. There have been ongoing discussions with Louis Matej, who has been actively pursuing his Masters Certificate, to join the Master Beekeepers Committee. It was reported that he is favorable to joining. A motion was made and seconded to accept Matej as the newest committee member if he so desires. The motion carried.

Lundy reported that the participant list, being kept by WSU, has not been updated since Sally Hasher's last update in August 2005. Hasher is no longer with the bee lab. Certificates have been issued but nothing else. Barb Sherod reported she had sent qualifications for 3 certificates in August which have not yet been issued. Discussion ensued on the status of participation in the program by WSU and lack of participation by Dr. Sheppard. The program was originated in 1985 as part of WSU Extension Service. Strategies were discussed to encourage WSU participation. Lundy volunteered to meet with WSBA President Tate and Dr Sheppard to discuss this issue and report back to the committee.

Discussion on encouraging participation in the MBCP at the local association level. Zahler mentioned that some members were charging for classes which, other than the \$10 book/testing fee, hadn't been done earlier in the program. Various reports suggest that no one is charging extra for the book and testing, but those who are teaching a more concentrated course, as opposed to ongoing, are charging enough to cover their expenses. There was discussion on whether or not there would be testing at the convention. It was decided there wouldn't be testing at this convention. Miller, who is on the current conventions planning committee, suggested this needed to be put before whom ever is planning for future conventions so a time can be allowed and announced in the convention schedule. It was suggested during the Executive Board Meeting would be a good time for testing.

Bueler asked permission and funding to get 200 more apprentice level books printed for the upcoming year. A motion was made and seconded to allow the printing. The motion carried. The funding portion will be brought before the WSBA Executive Board.

Sherods reported mailing costs associated with the mail in testing program and asked for reimbursement. The motion was made and seconded. The motion carried.

There was further discussion on encouraging participation in the website program. It was suggested brochures could be put out at local fairs. Several members reported already doing this at their local fairs this year. It was also suggested basic contact info could be put onto various business card incarnations. Lundy will draft a card for review.

A motion was made and seconded to adjourn the meeting. The motion carried.

Respectfully submitted; Tim Bueler, Secretary MBCP

## The convention, continued

*(Continued from page 5)*

changed; these occur approximately once every 100 to 300 bases. There are many techniques for SNP detection and genotyping, such as restriction fragment length polymorphism PCR (RFLP-PCR), SSCP, allele specific hybridization, primer extension, allele specific oligonucleotide ligation sequencing. } of honey bee variation, so look for this technique in the future to identify trait markers. Jay also talked about health care for and by honey bees. He thinks they may have found a symbiotic bacteria that resides with the larvae that suppresses AFB. Jay recommends that beekeepers know how to identify AFB, destroy AFB comb, try hygienic queens and use antibiotics as a last resort.

Dr. Tom Rinderer;

Discussed Africanized honey bees. The AHB is native to tropical east Africa, is drought tolerant, is capable of swarming 12-15 times a year, appears to stop its progression across north America at the 55° rain fall line (with exceptions in the southern United States), will typically start to build up the colony during the rainy season. In cooler locations that do not have flowers blooming for nectar and pollen the colonies appear to die out by starvation.

The Russian honey bee queen program; focused on research of specific traits for mite resistance. 30-40% threshold for tracheal mite infestation. Russians appear to have resistance to both tracheal and Varroa mites. None of their test colonies are treated with chemicals. Charlie Harper & Manely Bigalk are a few of the CRADA (Cooperative Research and Devel-

*(Continued on page 9)*



Leonard is having so much fun!

## WSBA Officers & Exec. Committee

### President:

Jerry Tate, E. 8900 Maringo Dr, Spokane, WA 98212  
509-924-6669, President@wasba.org

### Vice President:

Eric Olson, 93 Camfield Rd., Yakima, WA 98908  
509-966-2867

### Secretary:

Jody Pilarski, 9125 Edgewater Drive SW, Lakewood, WA  
98499-1925, 253-988-3090, Secretary@wasba.org

### Treasurer:

Lisa Knox, P.O. Box 1331, Kingston, WA 98346  
360-297-6743, Treasurer@wasba.org

### Area #1 Representative:

Tim Bueler (2007), 7914 69<sup>th</sup> Ave. SE, Snohomish, WA  
98290, 425-334-9684, Area1@wasba.org

### Area #1b Representative:

Van Sherod (2007), 2429 2nd Ave. W, Seattle, WA 98119  
206-284-1520

### Area #2 Representative:

Robert Smith (2008), 15525 Castle SE, Yelm, WA 98597  
360-894-2159, Area2@wasba.org

### Area #3 Upper Valley Representative:

James Bach, 21 N. 1st Ave. Suite 236, Yakima, WA 98902  
Area3a@wasba.org

### Area #3 Lower Valley Representative:

Arlene Massey (2006), 2781 Hornby Rd, Grandview, WA  
98930, 509-882-4601

### Area #4 Representative:

Miriam Bishop (2006), 14 Shangri Lane, Twisp, WA 98856  
509-997-9699, Area4@wasba.org

### Area #5 Representative:

Paul Hosticka (2007), 517 S. Touchet Rd., Dayton WA 99328  
509-382-8939, Area5@wasba.org

### Area #6 Representative:

Robert Arnold (2007), 42615 N. Division Rd., Deer Park,  
WA 98006, 509-276-2399, Area6@wasba.org

For more information,  
please visit us at:

**[www.wasba.org](http://www.wasba.org)**

# Annual Meeting Minutes

Oct. 13, 2006

The meeting, held in Bellingham Washington, was called to order by President Jerry Tate.

Jim Bach took the **minutes for the executive meeting** held on Thursday, Oct. 12<sup>th</sup>. He will produce them for publication in the newsletter. The Secretary's February 18, 2006 **minutes** were accepted as published in the newsletter, with two corrections. The name Jill Mueller should have been Jo Miller and Pete Spinelli should have been Pete Sallee.

The **Treasurer's report** was published in the 2006 Fall conference syllabus

Total Funds on Hand from checking, savings, and petty cash.....	\$ 4493.11
WSBA Savings CD.....	7,213.65
WSBA PR Fund.....	2,234.85
Thurber Scholarship Fund.....	2,592.49
Thurber Fund CD.....	29,500.00
Carl Van Wechel Research Fund.....	130.79
Carl Van Wechel CD.....	6,195.72
Alvina Timmons Scholarship Fund .....	2,540.73
Alvina Timmons CD.....	25,500.00

A motion was made and seconded to accept the Treasurer's Report with two corrections as made by Lisa.Knox.. The motion carried.

The 2006 WSBA **Membership Summary** showed a total of 94. A motion was made and seconded to accept the membership report as presented in the syllabus. The motion carried.

The **convention for 2007** will be at Sun Mountain.Lodge Even though Miriam Bishop has been ill, she has kept things going forward. President Tate stated the executive board and WSU will help Miriam with the agenda and selection of speakers.

The **Scholarship Committee** met to determine the recipients of this year's scholarships. The committee members are John Timmons, Lisa Knox, and Jerry Tate.

The Thurber Scholarship Fund awarded \$2000 to Debbie Delaney and \$1000 to Ben Horwath.

The Carl Van Wechel Research Fund awarded \$750 to Brett Cole.

The Alvina Timmons Scholarship fund awarded \$1000 to Fatimah Alhamlan.

The total for the scholarships is \$4,750.00 for these WSU students. President Tate will post on the website more information regarding the scholarships. One requirement is that the recipients will come back next year to make a report on their research

*(Continued on page 10)*

## Classified Ads

FOR SALE: 60-frame Hubbard Extractor, Cowen Uncapper with Conveyor, Capping Spinner, jacketed sump with pump & motor, two 200-gallon, jacketed stainless tanks with legs, one 300-gallon, jacketed stainless tank with legs, one low pressure steam boiler.

ALL for \$15,000.00. Please call Gary Scott  
1202 Juniper St., Milton, WA 98354  
253-922-7940

**Wanted:** Honey harvesting equipment for new beekeeper. Still small potatoes (one hive!) Would like to beg-borrow-steal-**BUY** a hand-cranked extractor, capping knife, and anything else that I might need to harvest honey. Whatcom/Skagit/Lower BC area. I'm in Bellingham. Michael Jaross 360-676-9214 or michaeljaross@gmail.com

For Sale: Honey Extractor, Dadant & Sons, model # 90-7E, 60 frame, stainless steel. \$1850 or best offer. Photos available. Contact Ron Green at nichaela@yahoo.com. Additional contact information: Ron Green, 1382 Willard Rd., Bingen, WA 98605; phone 509-538-2568

### **Honey Vendor needed for Cle Elum, WA Farmers' Market.**

The market is in full swing from now until October. We understand local honey is in short supply right now, so if you can sell honey at our market later in the summer, please contact us! If you have honey right now, please contact us! Our Market is on Saturdays on the grass lot next to "Pioneer" Coffee, from 10 a.m. to 2 p.m. We are on Cle Elum's main street, so we get ALOT of traffic due to our "recreation" location.

Please contact: Cathy Carroll, Market Manager  
trademark@iezpc.com  
(509) 674-4681

Shallow supers, in lots of 100, \$5.00 each box. Nine frames each with fully drawn comb.  
Call Bruce Bowen at 360-422-5146, or 360-961-1793 (cell).



## An Open Letter From Jan Dormaier, Honeybee Investigations

October 14, 2006

This letter's purpose is to help inform the beekeepers that Honeybee Investigations will not be doing mite testing in the future.

Since 1988, this business has received tremendous support and encouragement for the beekeepers of Washington, Idaho and Oregon, as well as California... Indeed several other states west of the Mississippi as well.

Thank you for your business over the years. My husband and I have moved to Lyndon, WA with new full time job obligations that make the two week report time guarantee very difficult to keep. I started Honeybee Investigations as a timely testing service specifically for beekeepers to have another tool in their arsenal against mites and nosema disease.

It has provided me an opportunity to meet and speak with so many of you over the years, I will always treasure that. My interest in beekeeping will continue, just not in the active role that it has been in the past.

Sincerely,

Jan Dormaier

P.S. Our new address is:       1020 Pine St.  
  Lynden, WA 98264

## The convention, continued

*(Continued from page 7)*

opment Agreement ) holders of true Russian queens from the Baton Rouge Lab in Carencro Louisiana. Only CRADA holders have the true Russian queens. Russian bees will build up using protein supplements or pollen and are not prone to build up with sugar syrup alone. During the first few days after emergence Russian adult bees appear to groom themselves using their mid legs to remove mites. Colonies with laying workers can be re-queened by moving a queen cell into the colony. Direct re-queening does not work. Improved Tuscan diet (look it up as a pollen substitute).

Dr. Michael Burgett:

2006 Pollination survey. This is the last year for the survey due to lack of participation and funding by OSU. There are 1/2 as

*(Continued on page 13)*

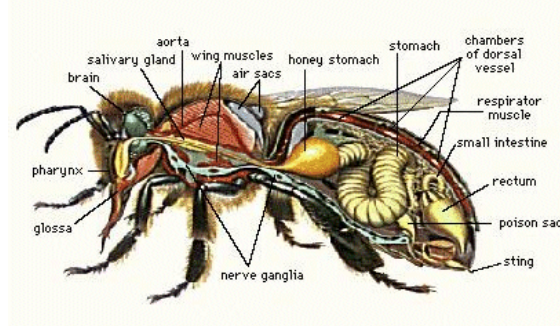


E-mail: [ruhlbeesupply@yahoo.com](mailto:ruhlbeesupply@yahoo.com)

**RUHL BEE SUPPLY**  
Beekeeping Supplies - Honey - Bees

17845 SE 82nd Drive  
Gladstone, OR 97027

The Johnson Family  
(503) 657-5399



# Annual Meeting minutes, continued

(Continued from page 8)

Sue Olson's term on the **Honey Board Nomination Committee** is expiring this year. Bob Arnold was asked to be her replacement at the executive meeting so his name will be submitted to the National Honey Board. It is necessary to submit two names so the 2<sup>nd</sup> nomination is Paul Lundy.

Dr. Steve Sheppard said he will be applying for a regional grant and he wants help from OR, WA and ID. President Tate asked for volunteers to write letters of support. Volunteers are Bob Arnold, Ted Swenson, Jerry Tate, Tim Bueller, Eric Olson, and President Tate will contact Puyallup to get a letter from Lewis.

Jim Bach was asked to recruit for the **nominations of officers**. He came to the podium and announced the President had appointed three people as **At-Large Representatives** to the Executive Board Their names are listed below.

Jim Miller will represent Eastern Washington

Lee Massey will represent Central Washington

Ron Babcock will represent Western Washington

**Area 3-** The nomination committee nominated Arlene Massey. Thrice Jim Bach asked for nominations from the floor with no response. A motion was made and seconded to close the nominations: The motion carried. **Arlene Massey** is the representative for Area 3.

**Area 4-** The nomination committee nominated Miriam Bishop Thrice Jim Bach asked for nominations from the floor with no response. A motion was made and seconded to close the nominations: The motion carried. **Miriam Bishop** is the representative for Area 4

**Treasurer-** The nomination committee nominated **Lisa Knox**. Thrice Jim Bach asked for nomination from the floor with no response. A motion was made and seconded to close the nominations: The motion carried. Lisa Knox is the Treasurer.

**Secretary-** The nomination committee nominated **Jody Pilarsky**. Once again Jim Bach asked thrice for nominations from the floor with no response. A motion was made and seconded to close the nominations: The motion carried. Jody Pilarsky is the Secretary.

**Vice-President-** The nomination committee nominated Eric Olson. A motion was made and seconded to close the nomination: The motion carried. **Eric Olson** is the Vice-President.

**President-** The nomination committee nominated **Jerry Tate** for President. A motion was made and seconded to close the nomination: The motion carried. Jerry Tate is President.

(Continued on page 11)

## PACIFIC NW BRED "SMART" QUEENS

### WILD CAUCASIAN / SMR / RUSSIAN SURVIVOR STOCK

Hardy. Work @ Cooler Temperatures

HYGIENIC      MITE RESISTANT

Abundant Drones  
Isolated Mating Yards

## OLYMPIC WILDERNESS APIARY

Available Summer & Fall only

866.204.3426 (toll free)

harbees@olyopen.com      www.owa.cc



406-883-2918  
1-800-548-8440  
FAX 406-883-4336  
www.westernbee.com



Dick Molenda  
President/General Manager

P.O. Box 190

WESTERN BEE  
SUPPLIES, INC.  
BEE WARE  
&  
WOOD PELLETS

5 9th Avenue East  
Polson, Montana 59860

## HEITKAMS' HONEY BEES

PAT, RUSSELL & CRAIG HEITKAM  
4700 FIRST AVENUE • ORLAND, CA 95963  
BUS. 530-865-9562 • FAX 530-865-7839  
Email: heitkamsbees@sisna.com



Queens, Bees, Honey & Pollination

# Annual Meeting minutes, continued

(Continued from page 10)

**\*\*This will be the last year for Jerry Tate as President and Lisa Knox as Treasurer. Members are asked to start thinking of candidates for these two positions.**

Eric Olson informed us that the **Apiary registration fees** have now accumulated to \$73,534.00. The money is to be used for “research. projects that will help us on our current problems”. It was decided at the executive board meeting that we continue with the fees, continue to move forward, and to keep Jim Bach, John Timmons and Eric Olson as the current committee. We need to fill positions for an Apiary Advisory Board to advise the Director of Agriculture and help in the administering of funds for some good projects.

The **WSDA Industry Apiary Program Update**, presented in the convention syllabus, showed registrations have been keeping consistency since 2002. The out-of-State pollinators stopped paying in 2000. President Tate said to read the local ordinances at the State level. “Almost all ordinances in the State of WA”, he said, “require that hives must be registered.” President Tate cautioned all beekeepers in Washington to be aware of the local ordinances and be sure to register their hives with the State. It is not necessary to be a member of WSBA to register.

## New Business

A contribution is requested to assist in the publication of a pesticide book. Several other organizations, including OSBA and the Oregon Dept of Agriculture, have agreed to participate in its funding. Eric Olson stated, “This book gives the beekeeper information on how certain pesticides are going to affect the bees. It allows the beekeeper to go to one book and find information..” Erik Johannsen said the title of the publication is **How to Reduce Bee Poisoning from Pesticides**. The executive board discussed the project at yesterday’s meeting and tentatively agreed to an amount to fund. A motion was made and seconded to appropriate \$3000 to support publication of the pesticide report. The motion carried.

As President Tate stated earlier, Mike Burgett’s reports are really important. We need the information that his surveys contain. However, good data is difficult to find and Mike will not be able to continue on data collection because of funding. A motion was made by Eric Olson and seconded to approve up to \$500 to have the **Pollination Survey** done by **Mike Burgett**. The motion carried. President Tate encouraged everyone to respond so we could get a better sample and better information. We can review it again next year. The latest newsletter has the survey at WASBA.org. The web master, Jane Bedinger, suggested also putting the survey on line. Jane will talk with Mike about putting it on our website.

Questions were brought up on how to address or fund the expenses of the bee yards. Tim Bueler has start up expenses for the Puyallup bee yard. Money is needed to help operate the apiaries. Steve Sheppard said there is grant money available so the yards need to present a list of expenses and give the expenses to Marina Meixner. President Tate and others agreed that the bee yard offers the best training tool to promote beekeeping. He also believes the proceeds from the yard should go back into the yard. Another suggestion was that any extra money from Field Days should go back to the local associations. We cannot use other monies that are designed for research to help with the beeyards..

Jim Bach reminded us we currently we have a **Section 18** for Api Life Var, fluvalinate in Apistan, coumaphos, formic Acid,

### **WSBA Beekeeper Classified Ads**

Classified ads are \$5 per insertion, for a maximum of 30 words. **(FREE for WSBA Members)**.

To place an ad, please mail your ad, with payment, made out to:

Washington State Beekeepers Association  
c/o Newsletter Editor  
P.O. Box 1331  
Kingston, WA 98346-9301  
Fax: (425) 527-4251

Please **CLEARLY PRINT** your ad. Don’t forget to include your contact information (phone, fax, e-mail).

Your ad will run in the next printing of the Newsletter when received by the 15<sup>th</sup> of the month prior to publication. **The ad will run for two (2) newsletters.** (You may email your submission to editor@wasba.org and mail your payment to the P.O. Box.)

thymol, Api-Guard, sugar esters (Sucroicide), and Api Guard. The need for a more versatile weather related medication was discussed. Most everyone felt we need something not weather related. Hivastan can be used as a miticide. There has been a 10 fold reduction on varroa and it is used like a grease paddy. The bees keep taking it till it is used up. It was brought up for discussion that although coumaphos is not effective against varroa mites it is very effective against the small hive beetle.. Jim Bach and Erik Johannsen suggested that we do not omit a product we already have for it is difficult to get back again. A motion was made and seconded to obtain a Section 18 for Hivastan to be used for varroa control and Coumaphos to be used for the small hive beetle. The motion carried.

Our meeting was adjourned

Respectfully submitted by Linda Carney, Secretary

# Puyallup Field Day

## Puyallup Field Day Commentary

August 26, 2006

By James C Bach  
jcbach@fairpoint.net

### **Queen Problems:**

One beekeeper had 30% new queen losses. Someone who bought Texas queens said only 5% were good. They produced one frame of eggs and then were superseded. Another received eight WSU queens and only two survived. Another beekeeper had a 16% queen loss in his purchased queens.

One beekeeper raised some queens. 80 to 90% of his grafts took. That is, grafted larvae became queen cells. Out of 60 to 70 queens raised only three were what he considered excellent.

Another beekeeper that purchased Russian queens said there were a lot of drone mothers. But the colonies had very low Varroa mite levels. No actual data was provided.

Two Spokane beekeepers really liked five of the 25 WSU queens they received, and their colonies. They use queen catchers purchased from equipment suppliers.

Some reported between 30% and 40% queen loss in packaged bees. Late spring to early summer (April 15 – May 15) packages fared better than those in early spring (March – April 15). Early spring packages showed queen problems in mid May.

### *Author's comments:*

The above suggests that the average queen loss in the first paragraph was 54%! I've heard of problems in Russian queens for years. Though some buyers are impressed with them, when questions are asked they can't describe behaviors or data about the behaviors to support their opinions. But the majority of comments I've heard suggest that Russian queens don't produce nearly as good colonies as we would like as beekeepers.

Remember if you are picking up queens with your fingers or a queen catcher to wash them in alcohol after each queen. If you don't you will be transferring the odor of the first queen to the second, etc. When you put the marked queen back into a colony the bees will question whether she is their mother, resulting in queen harassment, rejection and or balling.

### **SMR now VSH:**

Dr. Marla Spivak's work with mite tolerance in bees found behaviors that she called Suppression of Mite Reproduction (SMR). Dr. John Harbo did studies on SMR queens and found that the worker bees appeared to have a better sense of smell for Varroa within capped worker cells, so the bees opened more cells and removed the mites and larval contents resulting in colonies with fewer Varroa mites. Now SMR queens are being called Varroa Sensitive Hygienic (VSH) bees.

### **WSU queen breeding project:**

WSU selects for: over-wintering ability, temperament – runny on comb, honey yield, mite tolerance, hygienic behavior and spring buildup – brood area.

They are currently breeding from eight sub-lines and the virgins all mate from the same drone source colonies.

In the WSU colonies, one half had no Varroa, the other half were treated. They had 30% colony loss from Varroa.

Staff doesn't quantify the colony size in the spring but do count frames of bees during their seasonal studies. They think: a) that mites stress the bees and smaller colony size is the result, b) colony size may be determined by nutrition the previous fall.

### *Author's comments:*

The WSU queens currently leave a lot to be desired. In my observations of queen cell production colonies and mating nucs in Pullman last year and colonies this year in Puyallup, they all severely lacked nutrition. The colonies only had scattered pollen around the brood area and the nucs only a few cells each. You can't raise good queens without prodigious quantities of pollen. The Puyallup colonies had less than a quarter of one side of a comb of stored pollen on August 26, 2006. Those colonies are not likely to store enough pollen to produce a nutritionally strong colony for wintering.

*(Continued on page 13)*

## Puyallup Field Day, continued

*(Continued from page 12)*

While WSU selects for wintering ability in their program, that quality is not defined. When asked how many combs of bees came through the winter, no answer could be given. So was it three, five or ten combs? What size colonies are they aiming for by March 1<sup>st</sup>? Depending on the size colony on March 1, spring build-up goals could differ greatly determined by whether the colonies will winter in Washington or be used for pollination in February in California.

Colony size is influenced by nutrition. It takes one cell of pollen and one of honey to produce a health bee. Less pollen than that and you will have malnourished bees resulting in shorter life spans and smaller colonies. A two story deep hive with 15 combs of bees in September should have four full combs - both sides - of pollen. The bees don't use much during the winter but will in January to March when raising brood. The nutrition availability issue really starts in mid to late summer since only a few small areas in Washington have varied pollen sources available in the fall. Since fall raised bees are physiologically different to ensure their ability to winter, it is critical that colonies have large stores of various pollens for diversified nutrition.

Colony size is determined by genetics. It has long been known that colony size is a selected trait. But colony size going into October, and in February, has been shrinking in the last 25 years. Several beekeepers have countered this trend by selectively breeding their own queens, with very good results.

### **Mite treatments:**

MiteAway II is formic acid in a dispensing device. The acid is highly temperature sensitive. It must be removed from treated colonies if the daytime high will be above 80 F. If not removed, there will be brood loss and possibly queen loss. Metal hive covers cause greater evaporation of the acid than wood covers and result in brood loss at lower temperatures, and depending on colony size.

Some remarked that there is a higher queen loss when using liquid formic acid and that the bees often don't make any attempt to supercede them. It has been reported that Formic acid treatments efficacy varies quite a bit. That is caused by the size of the colony in relation to the size of the hive. It is also caused by the bees' cluster density behavior at given temperatures.

One beekeeper said the use of Api-Life Var, a thymol gel product, results in more queen supercedure.

### **Closing comments:**

From what I read in beekeeping journals and newsletters and hear from beekeepers, we still have a long way to go to get back the ideal colonies for beekeepers and agricultural pollination we had in the late 1970s. The major problems as I see them are:

1. Queen quality, longevity and nutrition,
2. Colony size going into winter and in spring,
3. Varroa and Honey Bee Tracheal Mite levels allowed to get above the economic threshold,
4. Poor nutritional quality and quantity in hives,
5. Pheromone production by queens causing aberrant worker behavior,
6. A contaminated colony pheromonal environment caused by mite control substances and other residues in hives.

## The convention, continued

*(Continued from page 9)*

much honey bee colonies in the 3 PNW states to pollinate the local crops as acreage that needs them. Once a commercial beekeeper reaches about 1500 hives they typically need 1 full time employee. Profitability of honey bee products in order are; queen production, honey, then pollination.

Mr. Paul van Westendorp:

Beekeeping and mites in BC. BC developed methods of restricting bee movement throughout the province by enacting 14 bee districts. Use sticky boards made out of corrugated plastic (political signs), 12" by 16"; prepare a mixture of vegetable oil and Vaseline (thick slurry) and apply it to the sheet with a sponge brush. A screen is not needed like the ones coated with tangle foot. When done counting mites, squeegee off the debris and use again. Reminded folks about the Bee master short course in February 2007 at Simon Fraser University in BC. Space is limited to 50 persons.

*(Continued on page 15)*

# National Honey Board News

For Immediate Release October 16, 2006 |

## **NHB Nominations Committee Seeks New Members**

Longmont, Colo. – The National Honey Board Nominations Committee (NHNC) is seeking new members from the following states: Arizona, Arkansas, Idaho, Indiana, Montana, New Jersey, North Dakota, Pennsylvania, Vermont and Washington. The following states have a member who may serve one more term, but will need to submit two choices to the Secretary of Agriculture: Florida, Hawaii, Iowa, Kentucky, Massachusetts, Mississippi, Nebraska, New Mexico, North Carolina, South Dakota, and Wyoming.

The National Honey Nominations Committee consists of one member from each state. Committee members are individuals involved in the honey industry. Each state association submits the names of two potential NHNC members to the Department of Agriculture. The Secretary of Agriculture then appoints one of the candidates to be that state's Nominations Committee representative.

NHNC nominates the members and alternates of the National Honey Board (NHB) and submits the nominations to the Secretary of Agriculture for approval. The Secretary makes the final NHB board member selections. NHNC members attend one meeting per year, coinciding with the NHB's annual fall meeting. NHB covers the expenses of NHNC members.

NHB strongly encourages women, minorities, and persons with disabilities to seek nominations to NHB and NHNC, and to participate in Board and Committee activities.

Individuals interested in serving on NHNC should speak to their state association president.

NHB conducts research, advertising and promotion programs to help maintain and expand domestic and foreign markets for honey. These programs are funded by an assessment of one cent per pound on domestic and imported honey. For more information, contact Lisa Jager, NHB

## **Decrease in Pollinators Prompts Group to Call for Increased Data Monitoring**

Long-term population trends for some North American pollinators -- bees, birds, bats, and other animals and insects that spread pollen so plant fertilization can occur -- are "demonstrably downward," says a new report from the National Research Council. The report also found that there is little or no population data for many pollinators, prompting the committee that wrote the report to call for stepped-up efforts to monitor these creatures and improve understanding of their basic ecology. The North American Pollinator Protection Campaign (NAPPC) requested the Research Council report. NAPPC represents several agencies and organizations in the United States, Canada, and Mexico and is dedicated to raising awareness of this issue.

## **Beekeeping the Key to Longevity?**

Beekeeper Waldo McBurney, 104, of Quintar, Kan., was recently named the nation's oldest worker. McBurney and 52 other older workers from throughout the U.S. were recently honored by Experience Works, a nonprofit organization that provides job training and employment services for older Americans. McBurney has been keeping bees and selling honey for more than a half-century. Although he has dabbled in many businesses, he has been involved in beekeeping for 56 years. He was featured in NHB's Nucleus newsletter in 2005. McBurney attributes his health to an active lifestyle, which has involved long hours on the farm and, an activity he took up at age 65 -- long-distance running. He says staying on a healthy diet doesn't mean abstaining from the things one enjoys -- it's a matter of taking things easy. He cited breakfast as an example. "Breakfast is simple. It's often cold cereal, with banana and a little honey sprinkled on it. Perhaps a slice of toast ... with honey on it, of course. And a cup of green tea."



## The convention, continued

Ms. Sue Cobey:

Queen performance and instrumental insemination (II). Naturally mated queens (NMQ) mate over a time period of 4-13 days.

Sperm dosage:

NMQ 3-7.4 million stored, average of 4-6 million.

IIQ 2-6.7 million stored, average of 3-5 million.

IIQ average 8-12 ul of semen during instrumental insemination. The sooner the queen is released to lay, the better long term performance. Drones are the biggest limiting factor in successful insemination.

Dr. Jamie Strange:

Package bees; artificial swarms. They are a great way to get pests, disease, resistance, etc. What's in a package; queen various bees, mites or other pests. Bee to mite ratio from 250 ml (~350 bees) using an alcohol wash is 2-6 mites/100 bees or 5/100 (~9 mites using an ether roll) is about the WSU treatment threshold. If there are 10,000 bees in a package then you just bought 500 mites. Drones in packages were 5% at the worst. A 3# packages = 0.15 # of drones.

Dr. Steve Sheppard:

A wonderful talk based on the 1888 book by Mr. G. M Doolittle "Scientific Queen Rearing". This book is part of the Thurber Library that is in the care of Steve. Some of the concepts Mr. Doolittle put into practice are still relevant today.

Dr. Jamie Strange:

Bumble Bees as crop pollinators and the study of Melittology (the study of all bees).

Mr. Paul Hosticka:

Queen rearing on a small scale enthralled the audience. His methods really brought home to me how even I could start up my own queen rearing. His suggestion to attend a qualified course in queen rearing, such as Sue Cobey's course, it a good one. I've often wondered if, at the local association level, we could successfully raise our own queens, and Paul has shown me we can. After the presentation Paul had quite a large number of folks asking him for more information.

Mr. Van Sherod:

Bees wax candle processing demonstration. This was much more than a demonstration. Van's blue ribbon winning hand dipped candles all gave us pause. His techniques and use of simple equipment really shows that with a little attention to the details, anyone can produce wonderful hand-dipped tapers. I really like Van's method of melting the wax so you do not lose any of the fragrance and maintain the deep colors.

Dr. Marina Meixner:

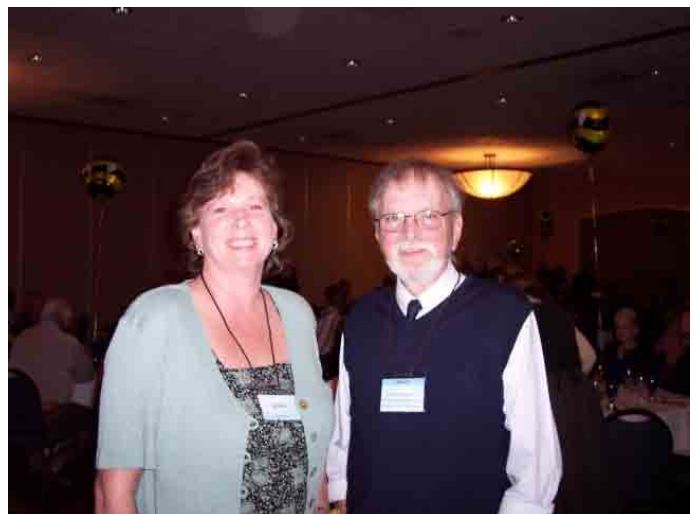
The WSU honey bee queen breeding program has really got a lot of local beekeeping associations fired up and supportive of the program. Marina outlined the progress of the program and how WSU is producing top notch queen. After her talk, I want to go back to my association and see if we can become involved in the queen rearing program.

Paul Lundy

## A Few Convention Photos



Van Sherod's wax processing demonstration. Quite the hit!



Lisa Knox and Michael Burgett before the auction.

P. Lundy  
Washington State Beekeepers Association  
Newsletter Editor  
P.O. Box 1331  
Kingston, WA 98346-1331

